

# SENSOR (D02-1015-276)

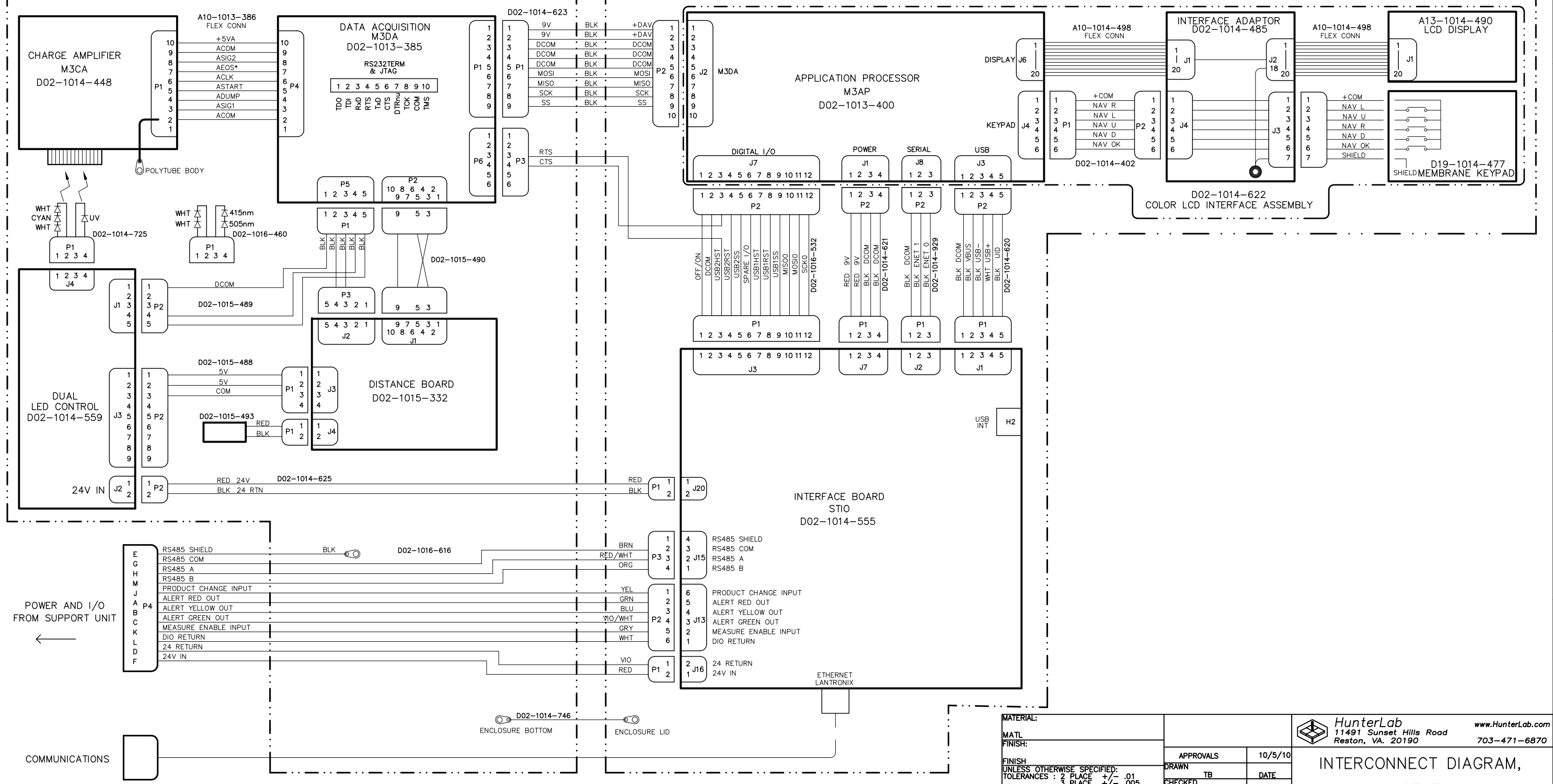
REVISIONS					
ZONE	REV	DESCRIPTION	BY	DATE	APPROVED
	1	REL TO REV 1 PER E-4022	TB	10/5/2010	JBF
	2	REL TO REV 2 PER E-4108	TB	3/8/11	TB
	3	REL TO REV 2 PER E-4141	TB	4/11/11	TB
	A	24V WIRING CHG PER E-4300	TB	10/3/11	TB
	B	DISTANCE BOARD ADDED PER E-4559	TB	02/05/13	TB
	C	ADD SHEET 3 PER E-4668	TB	07/18/13	TB
	D	NEW POWER D I/O CABLE PER E-5002	TB	11/12/14	TB
	E	WIRE COLORS ON D I/O CABLE PER E-5125	TB	1/20/15	MTS

BASE

COVER

(ELECTRO-OPTICS ASSY D02-1014-562)

(HOUSING ASSY D02-1014-614)



<b>MATERIAL:</b> MATL FINISH: FINISH UNLESS OTHERWISE SPECIFIED: TOLERANCES : 2 PLACE +/- .01 3 PLACE +/- .005 ANGLES +/- 1/2° DO NOT SCALE DRAWING ALL DIMENSIONS ARE IN INCHES DIMENSIONS APPLY AFTER FINISHING REMOVE BURRS AND BREAK SHARP EDGES .005 MAXIMUM INTERPRET DWG PER ANSI Y-14.5 1994		<b>APPROVALS</b> DRAWN TB CHECKED COG ENG PROJ ENG APPR	10/5/10 DATE  SIZE DWG No. D 03-1014-628 SCALE: NONE FILE: 14628E1E WT: LBS SHEET_1_OF_4	11491 Sunset Hills Road Reston, VA. 20190 www.HunterLab.com 703-471-6870
---	--	--	---	---

**INTERCONNECT DIAGRAM,  
STHT**

D 03-1014-628 E SHT\_1\_OF\_4

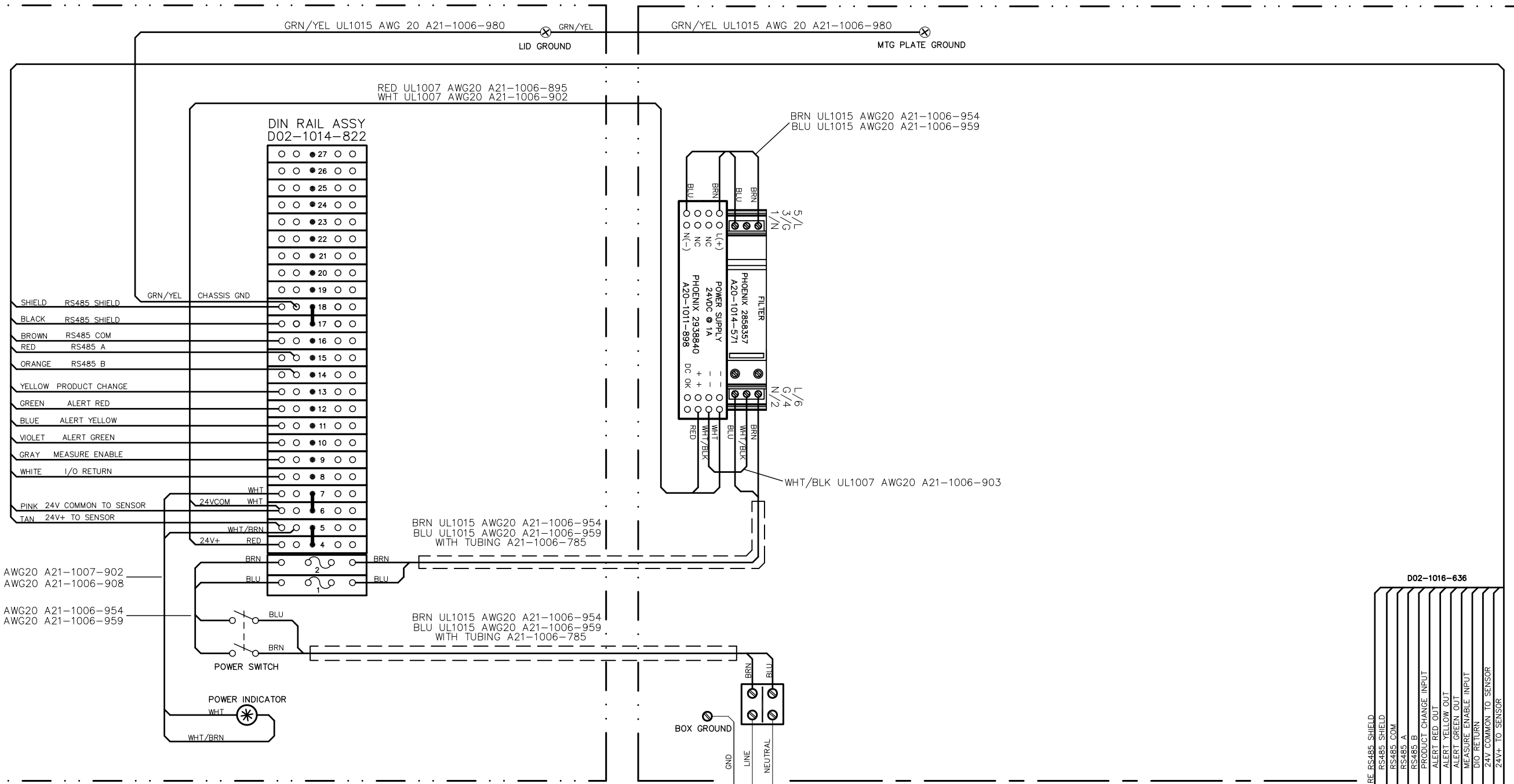
# SUPPORT UNIT W/O OPTIONS

(STANDARD VERSION D02-1014-823)

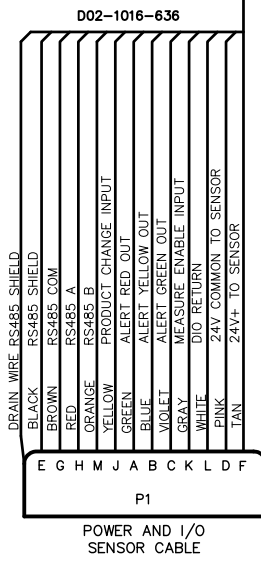
REVISIONS				
ZONE	REV	DESCRIPTION	DATE	APPROVED
		SEE SHEET 1 FOR REVISION DESCRIPTION		

COVER

BASE



SHIELD	RS485 SHIELD
BLACK	RS485 SHIELD
BROWN	RS485 COM
RED	RS485 A
ORANGE	RS485 B
YELLOW	PRODUCT CHANGE
GREEN	ALERT RED
BLUE	ALERT YELLOW
VIOLET	ALERT GREEN
GRAY	MEASURE ENABLE
WHITE	I/O RETURN
PINK	24V COMMON TO SENSOR
TAN	24V+ TO SENSOR



D 03-1014-628 E SHT\_2\_OF\_4

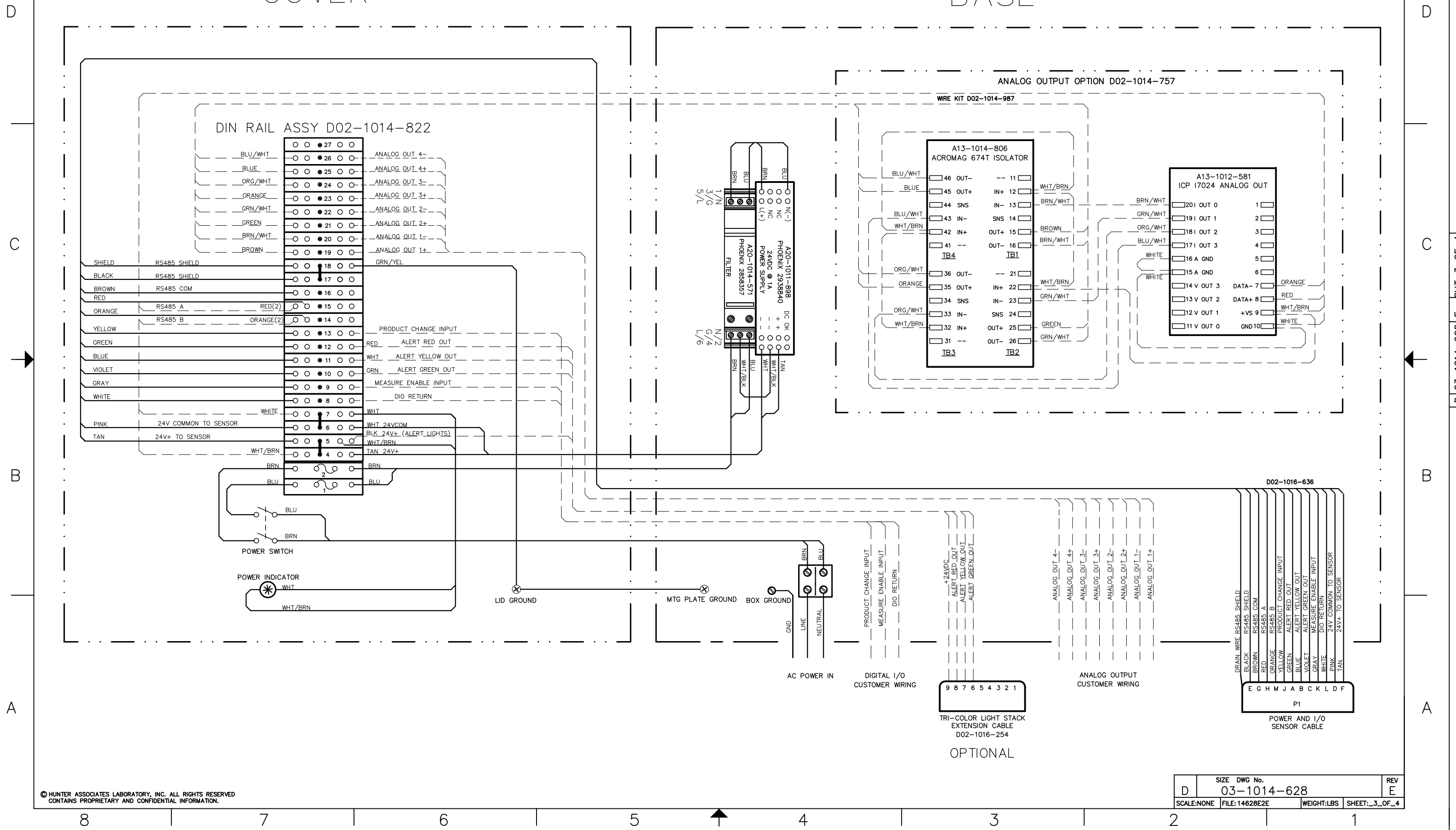
# SUPPORT UNIT

(STANDARD VERSION D02-1014-823)

REVISIONS				
ZONE	REV	DESCRIPTION	DATE	APPROVED
		SEE SHEET 1 FOR REVISION DESCRIPTION		

COVER

BASE

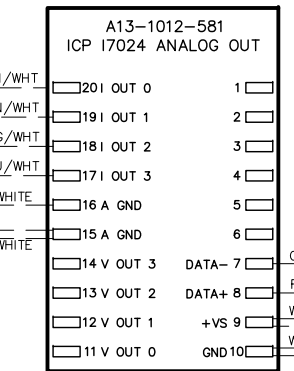
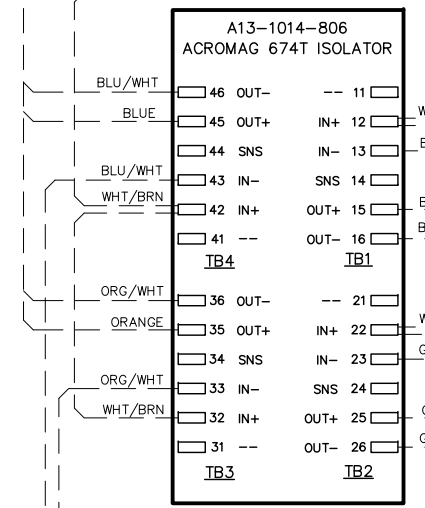


DIN RAIL ASSY D02-1014-822

BLU/WHT	27	ANALOG OUT 4-
BLUE	26	ANALOG OUT 4+
ORG/WHT	25	ANALOG OUT 3-
ORANGE	24	ANALOG OUT 3+
GRN/WHT	23	ANALOG OUT 2-
GREEN	22	ANALOG OUT 2+
BRN/WHT	21	ANALOG OUT 1-
BROWN	20	ANALOG OUT 1+
SHIELD	18	GRN/YEL
BLACK	17	
BROWN	16	
RED	15	
ORANGE	14	PRODUCT CHANGE INPUT
YELLOW	13	RED ALERT RED OUT
GREEN	12	WHT ALERT YELLOW OUT
BLUE	11	GRN ALERT GREEN OUT
VIOLET	10	MEASURE ENABLE INPUT
GRAY	9	DIO RETURN
WHITE	8	WHT
PINK	7	WHT 24VCOM
TAN	6	BLK 24V+ (ALERT LIGHTS)
	5	WHT/BRN
	4	TAN 24V+
	2	BRN
	1	BLU

ANALOG OUTPUT OPTION D02-1014-757

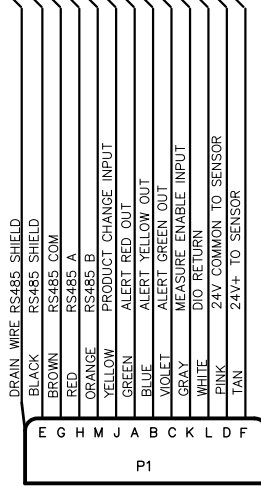
WIRE KIT D02-1014-987



TRI-COLOR LIGHT STACK  
EXTENSION CABLE  
D02-1016-254

OPTIONAL

D02-1016-636



POWER AND I/O  
SENSOR CABLE

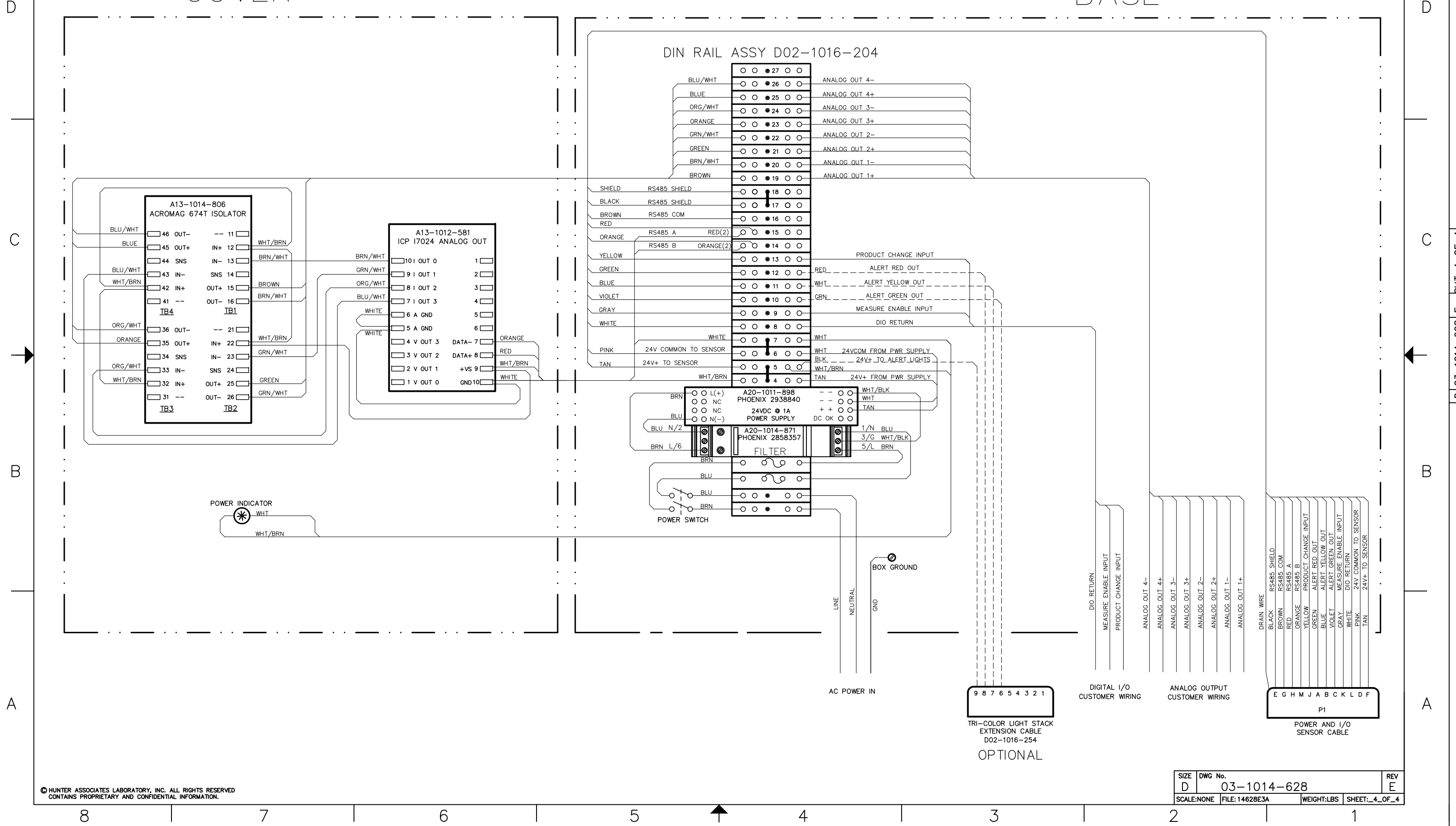
REVISIONS				
ZONE	REV	DESCRIPTION	DATE	APPROVED
		SEE SHEET 1 FOR REVISION DESCRIPTION		

# SUPPORT UNIT

(STAINLESS STEEL VERSION D02-1016-099 OR 108)

COVER

BASE



D 03-1014-628 E SHT\_4\_OF\_4